



Welcome To

WHARFSIDE

[LEARN MORE](#)



Beautiful 4 bedroom Summerland home



Edgehill Homes is proud to present this stunning Trout Creek home just a quick walk to the lake. Upon entering you will see soaring 19 ft ceilings with a staircase featuring custom railings leading to the second floor & open loft.

The living room features a gas fireplace & offers plenty of natural light & access to the patio and expansive, fully fenced backyard.

Featuring airy living spaces, arched hallways, custom kitchen with eat-in island and a primary bedroom on the main level, no detail was missed in the design of this home.

[TAKE THE TOUR BELOW](#)



1522 WHARFSIDE LANDING

- 4 Bedrooms
- 3 Bathrooms
- Primary bedroom with oversized windows
- Spacious, fully equipped kitchen
- Large, fenced yard
- Sought after neighbourhood
- Two minutes to the lake
- Plenty of parking
- Energy-Efficient Build Practices

*Let's take
the tour*



The Kitchen



The Heart of the Home: A Luxurious Kitchen

Prepare to be wowed when you enter this stunning kitchen – the centerpiece of the home. The kitchen boasts custom cabinetry, a spacious eat-in island that seats three, beautiful quartz counters, and designer lighting. Every inch of this space has been thoughtfully designed to create an unforgettable experience.

Why we love it

- Full-height pantry
- High end, brass cabinetry knobs
- Under-cabinet lighting
- Built-in microwave
- Pull-down Faucet
- Durable, wide-plank luxury vinyl plank

The Dining Room



Enjoy the company of your guests at a lovely table beneath a woven pendant chandelier. Take in the beautiful view of a spacious green backyard while you enjoy your meals together .

Why we love it

- 9 ft ceilings
- Designer lighting
- Sun-soaked area of the home

The Living Room



An Ideal Space for Entertaining Guests

Entertain your guests in style with this spacious living room, complete with a cozy gas fireplace and four-panel sliding glass door that opens up to a stunning patio, allowing you to fully embrace the Okanagan lifestyle.

Why we love it

- Gas Fireplace
- Full-height curtains
- Four-panel glass sliding door
- Opens up to the patio with barbecue hookup and oversized, fenced yard

The Primary



Retreat to This Luxurious Primary Suite at the End of a Long Day

Designed to be the ultimate relaxation space! Boasting large windows that brighten up the room with natural light, and cathedral ceilings that give the space a grand feeling, this suite is perfect for unwinding.

The Bathroom



Experience the ultimate relaxation with your very own personal spa at home. Enjoy a freestanding soaker tub, designer feature lighting, quartz counters, dual sinks, and large-scale custom tiles to create a spa-like atmosphere in your bathroom.



The Outdoor Space

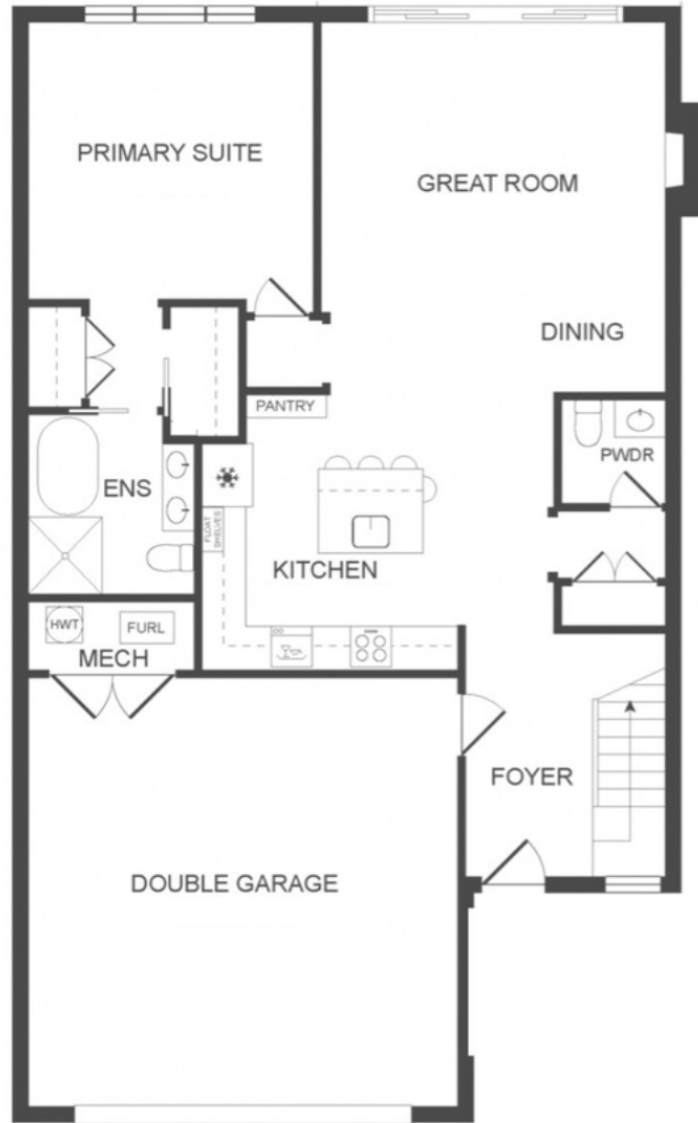


A Luxurious Outdoor Space That Feels Like Vacation Every Day

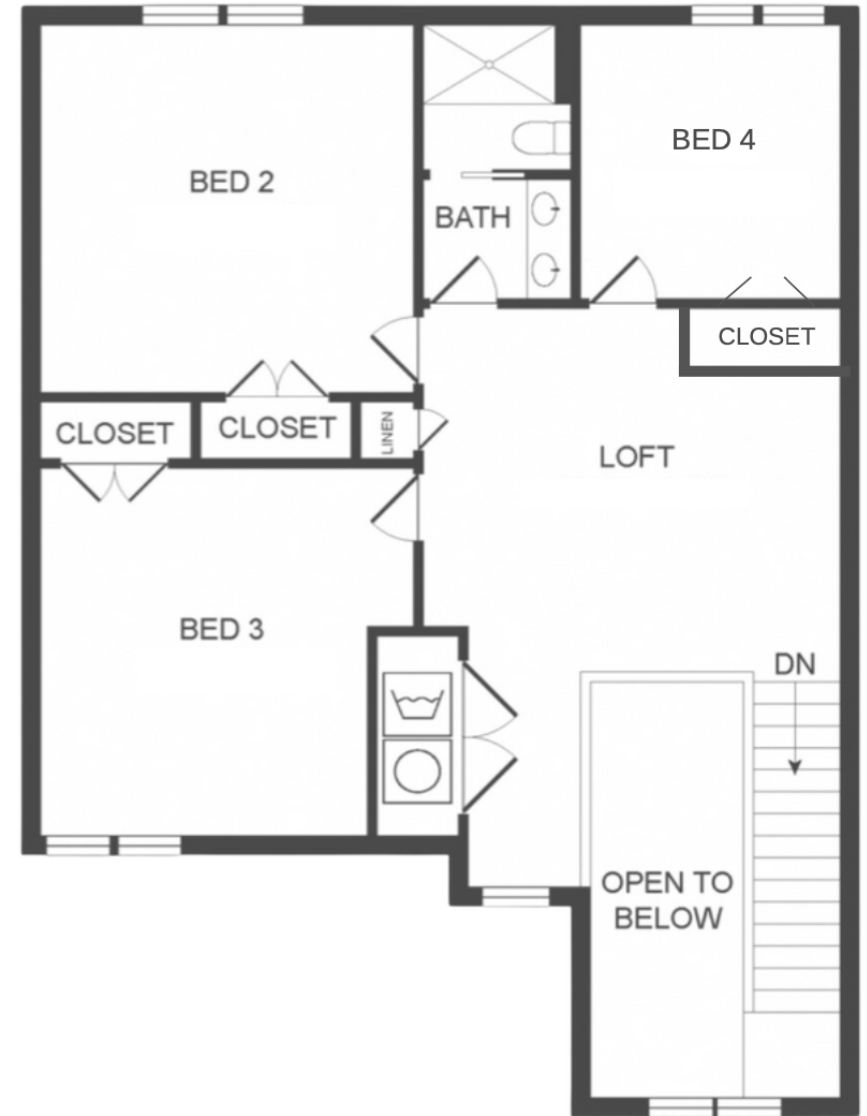
This piece of paradise will give you vacation vibes every day. A large, fenced yard, ample parking and an added bonus - it's just a short walk away from the magnificent Okanagan Lake.

The Floor Plan

— MAIN FLOOR



— UPPER FLOOR





EDGEHILL HOMES

At Edgehill Homes we place a high value on integrity and excellence in action. We consistently strive to dream big in our designs and bring that magic to life in our builds. Our kinship with our craft allows us to offer every client an elevated experience by finding joy in the journey of creating inspired spaces.

WE LOOK FORWARD TO WELCOMING YOU HOME

[PRIVACY POLICY](#) |

[COPYRIGHT 2023 EDGEHILL HOMES](#)